

# 410 W 4TH

MEATPACKING OFFICE OPPORTUNITY

BETWEEN WASHINGTON STREET AND 9TH AVENUE





# 410 W 14TH

## SIZE

Full 2nd Floor: 3,578 RSF

## ASKING PRICE

Upon request

## TERM

Negotiable

## HIGHLIGHTS

- Full floor office opportunity located in the heart of the Meatpacking District
- Currently built out with:
  - 9 Private offices
  - Conference room
  - Reception area
  - 3 Large co-working spaces
  - 2 Private restrooms
- High ceilings
- Hardwood floors throughout
- Tenant-controlled advanced air filtration system





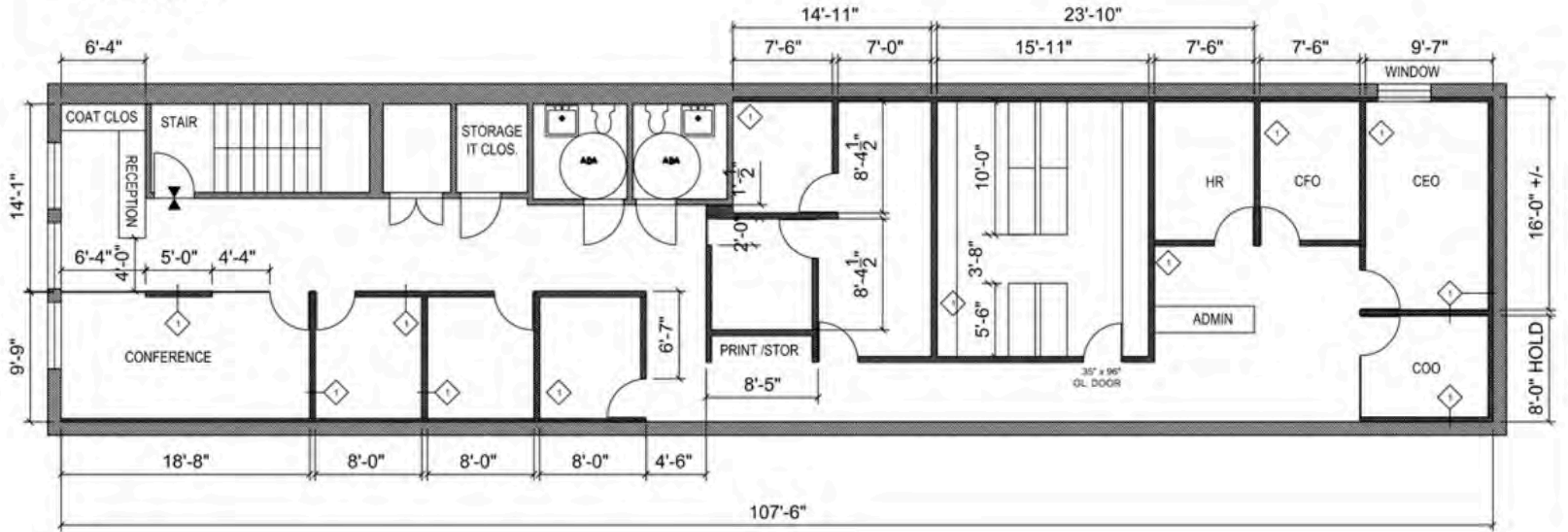
410W14TH





# 410 W 14TH FLOOR PLAN

AS BUILT







# CONTACT

ODED NACHMANI  
oded@currentadvisors.com  
516.652.0606

**CURRENT**  
Real Estate Advisors