

# 32 LAIGHT STREET

RETAIL SPACE FOR LEASE

TRIBECA  
BETWEEN VARICK AND HUDSON STREETS

  
CURRENT

# 32 LAIGHT STREET

## SIZE

Ground Floor: 3,000 SF + Lower Level

## POSSESSION

Negotiable

## TERM

Negotiable

## RENT

\$18k/month

## HIGHLIGHTS

- Beautifully renovated turn key ground floor duplex condominium
- Space with 3 existing subdivisions, 2 bathrooms and kitchen
- Two means of egress on each floors
- 11'-12' ceiling heights
- Column free space
- 20' of frontage on Laight Street



# 32 LAIGHT STREET

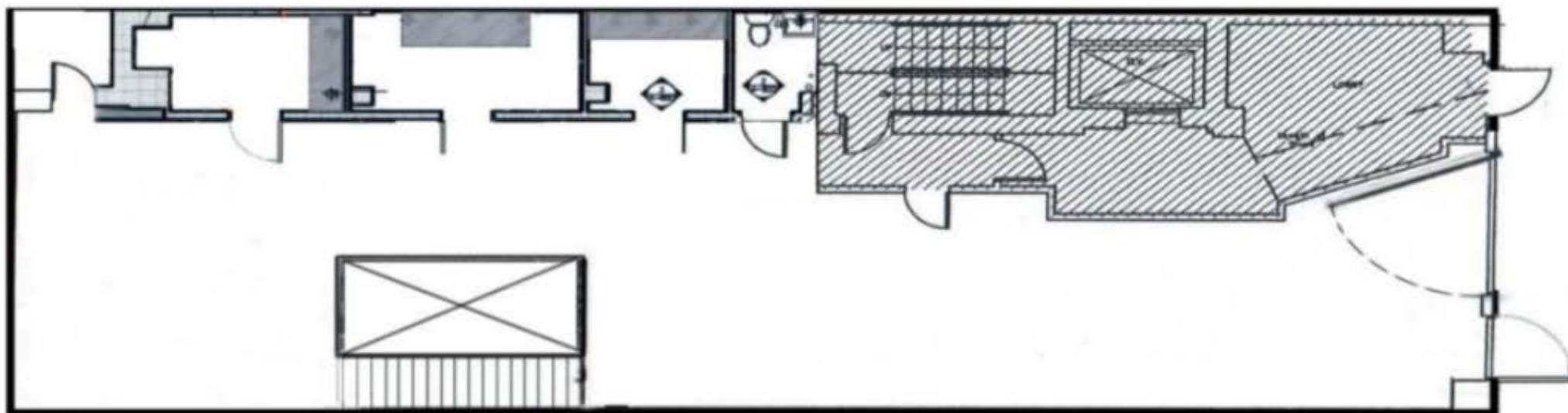


# 32 LAIGHT STREET



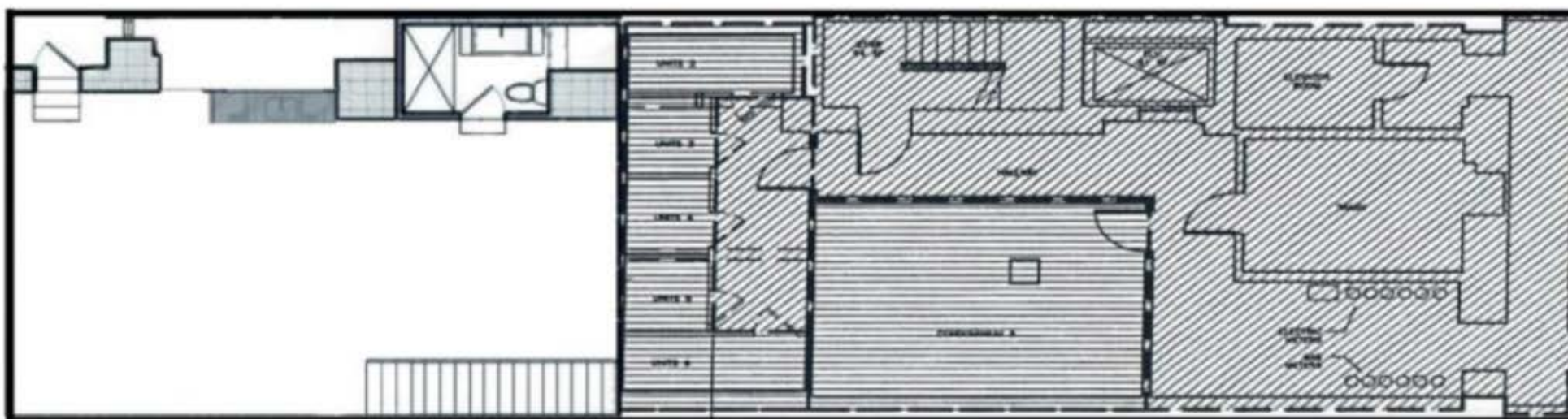
# 32 LAIGHT STREET

## GROUND FLOOR



2,000 NET SF

## LOWER LEVEL



1,000 NET SF

LAIGHT STREET





# CONTACT

MICHAEL SEGERMAN

[msegerman@currentadvisors.com](mailto:msegerman@currentadvisors.com)

516.297.3337

**CURRENT**<sup>®</sup>  
Real Estate Advisors