

# 420 LEXINGTON

GRAND CENTRAL SUBLEASE OPPORTUNITY





# 420 LEXINGTON AVENUE

Partial 20th Floor | Sublease

## SIZE

4,270 SF

## POSSESSION

Immediate

## TERM

Through March 2025

## HIGHLIGHTS

- Plug and play, built and furnished space
- Built with reception, 2 executive offices, 4 private offices, large conference room, open area and pantry
- Building offers "Graybar19," a newly constructed tenant-only amenity center with shared conference center, lounge seating and outdoor meeting space
- Direct access to Grand Central Terminal



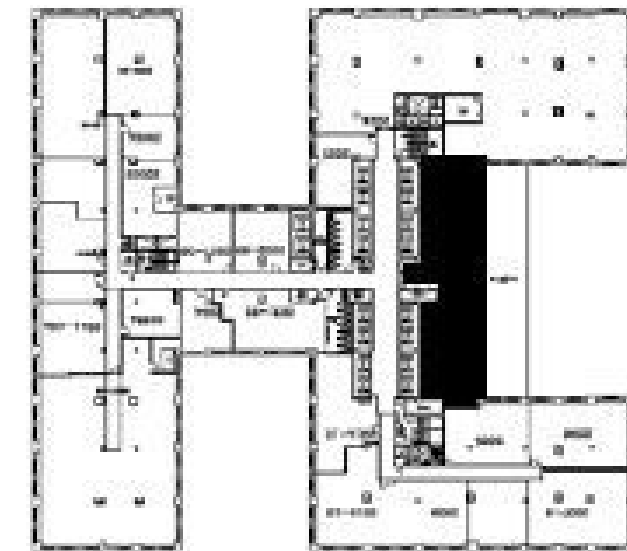
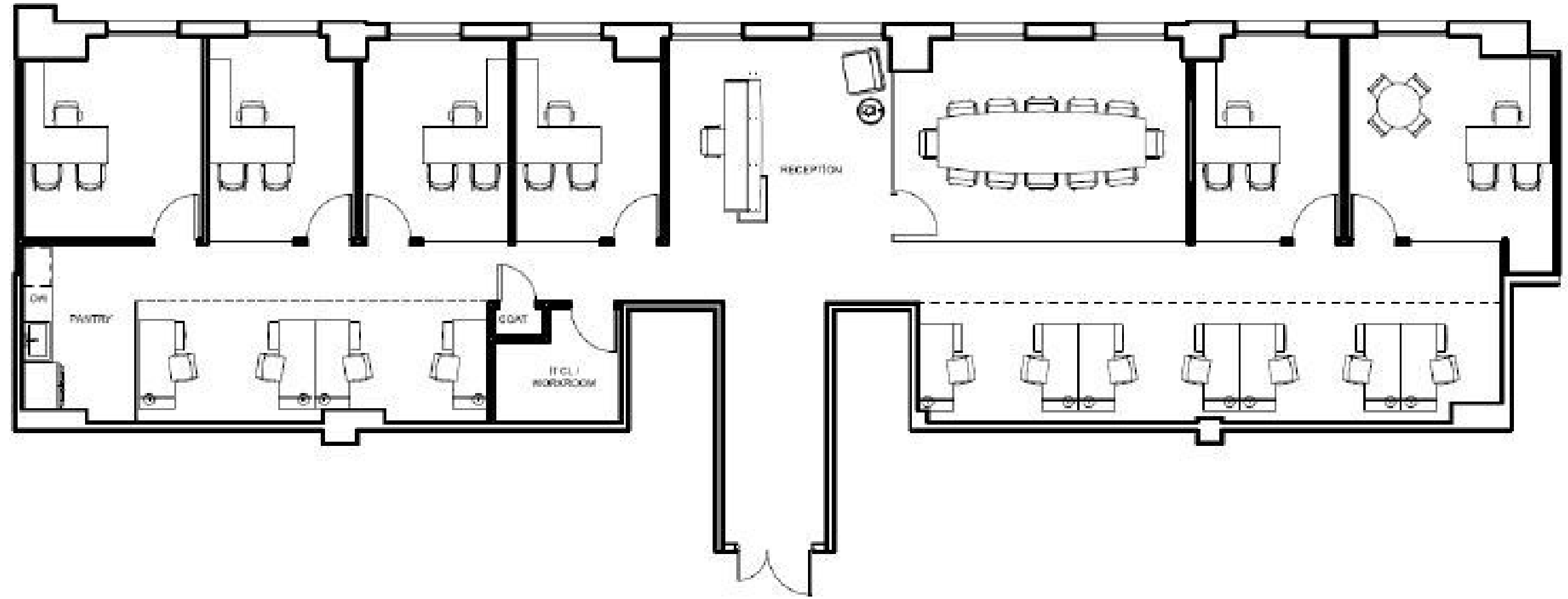






# FLOOR PLAN

- 2 Executive offices
- 4 Private offices
- Reception Area
- 1 Conference room
- Open area
- Pantry







# CONTACT

ADAM HENICK

[adam@currentadvisors.com](mailto:adam@currentadvisors.com)

646.845.0351

**CURRENT**<sup>®</sup>  
Real Estate Advisors