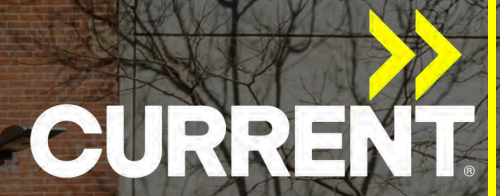


555

WEST 25TH STREET

BETWEEN TENTH AND ELEVENTH AVENUES



GALLERY HENOCH

555

dna



BUILDING OVERVIEW

- Full floor office space available
- Tenant controlled HVAC
- Private keyed elevator entry/video security system
- On-site super
- 400 AMPS per floor
- 3 Sides of light on every floor
- 12' Ceiling heights



555 WEST 25TH STREET

Full 5th Floor

SIZE

9,055 RSF

POSSESSION

Immediate

ASKING

\$54 PSF

TERM

3-10 Years

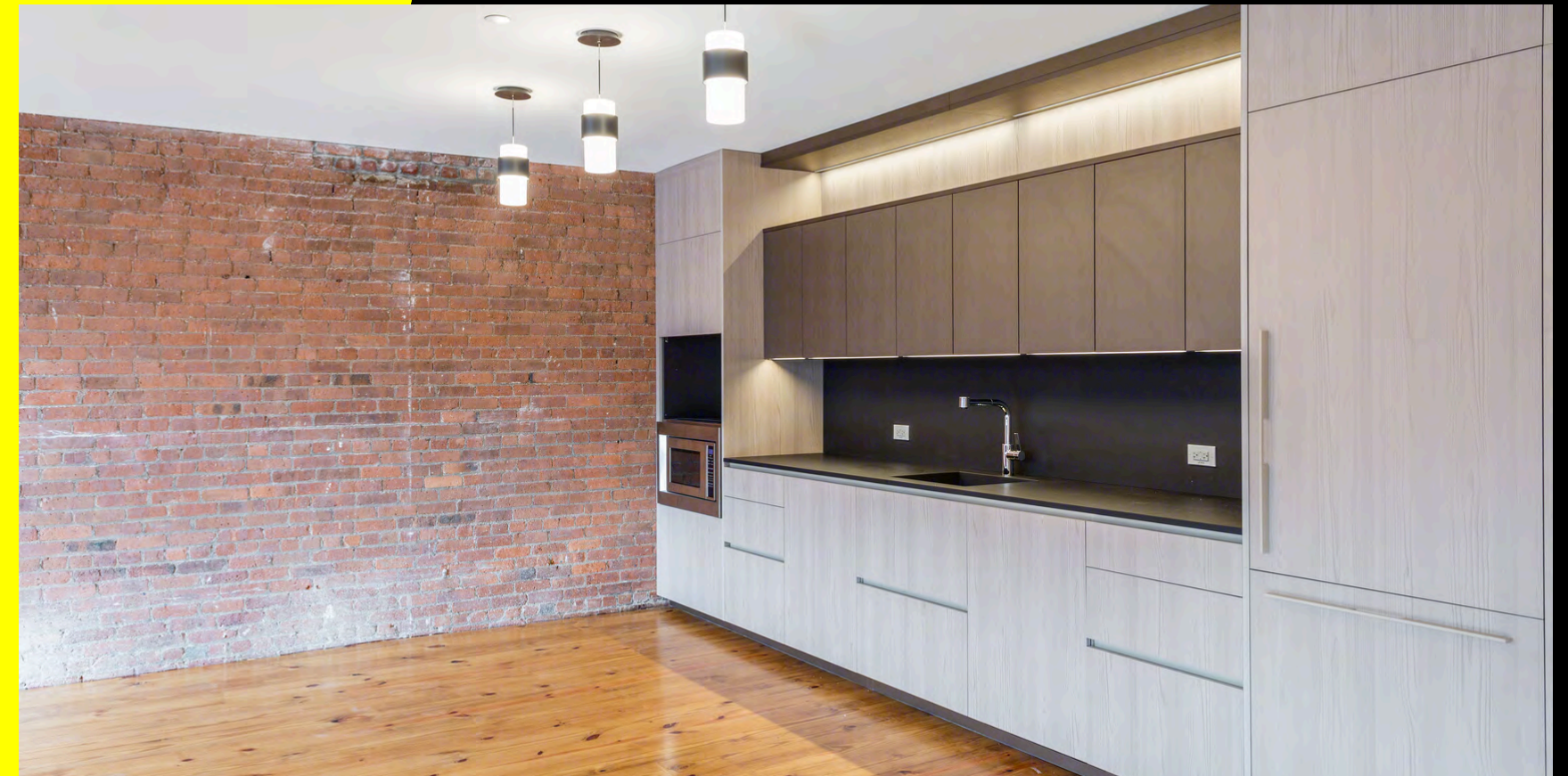
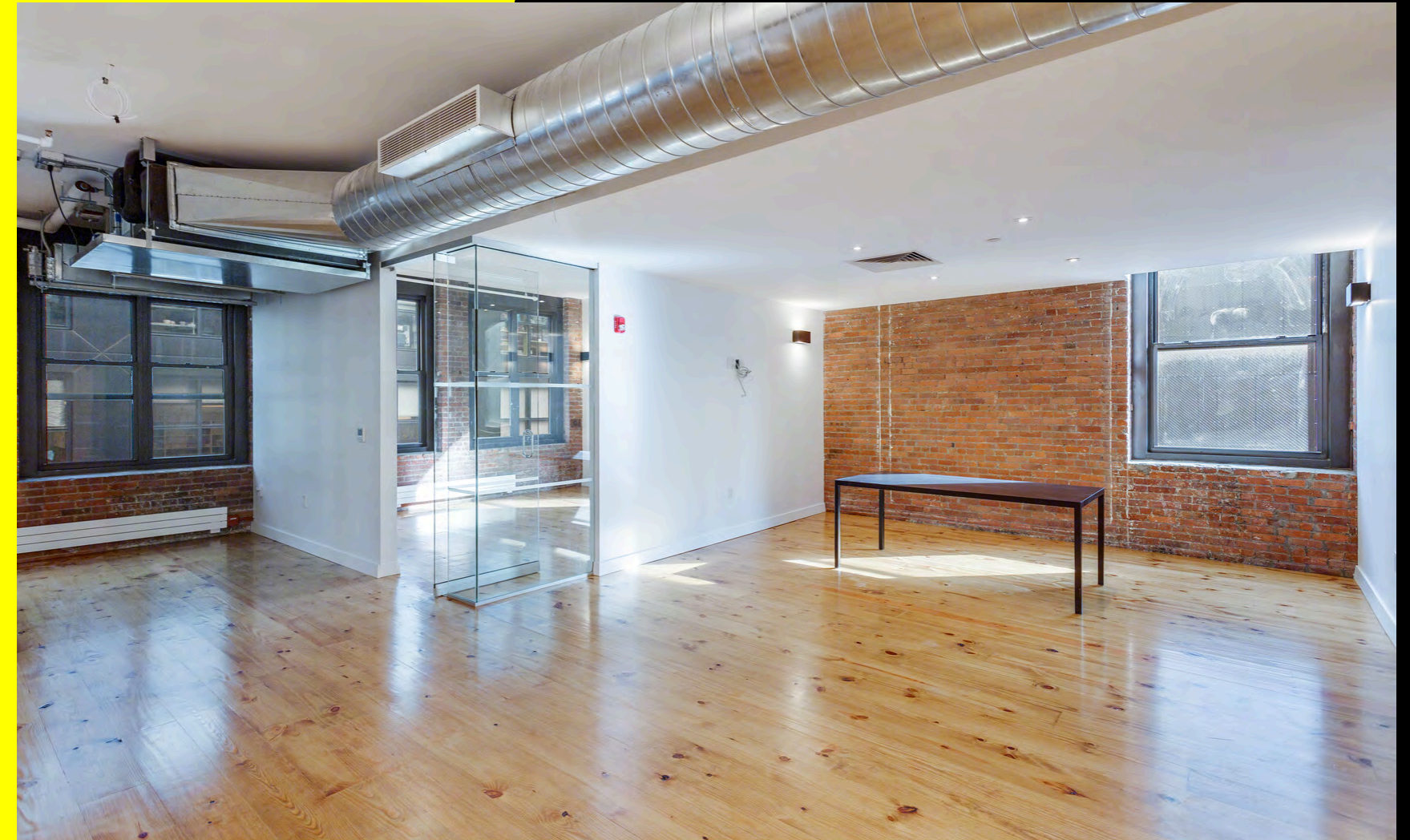
HIGHLIGHTS

- Newly renovated pre-built full floor with:
 - 2 Large Offices
 - 2 Large conference room
 - Wellness Room
 - Open area
 - Brand new wet pantry with Miele appliances and Italian Poliform cabinetry
 - 2 Brand new private restrooms
 - Reception and lounge



555 WEST 25TH STREET

Full 5th Floor



555 WEST 25TH STREET

Full 4th Floor

SIZE

9,011 RSF

POSSESSION

Immediate

ASKING

\$54 PSF

TERM

3-10 Years

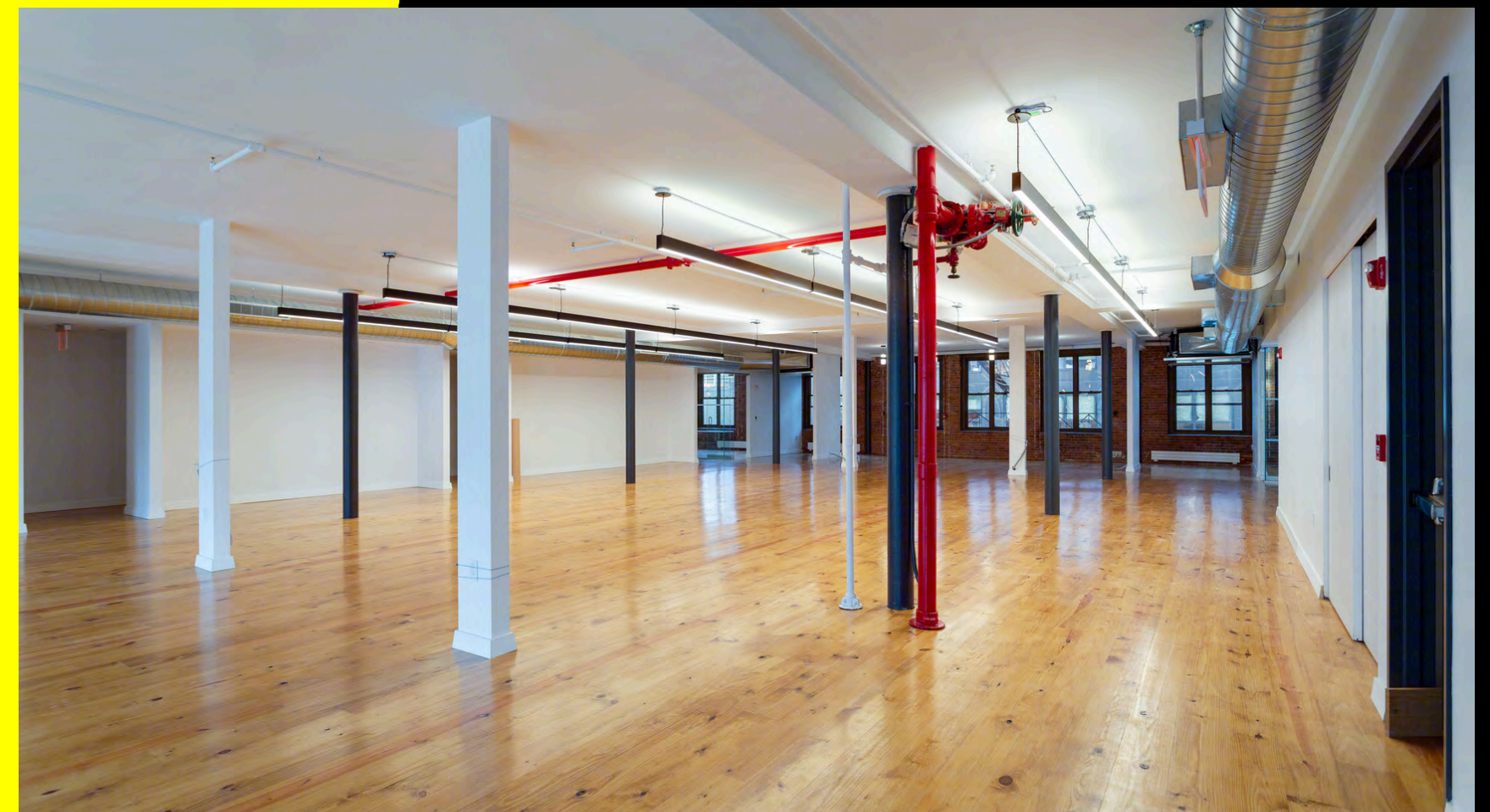
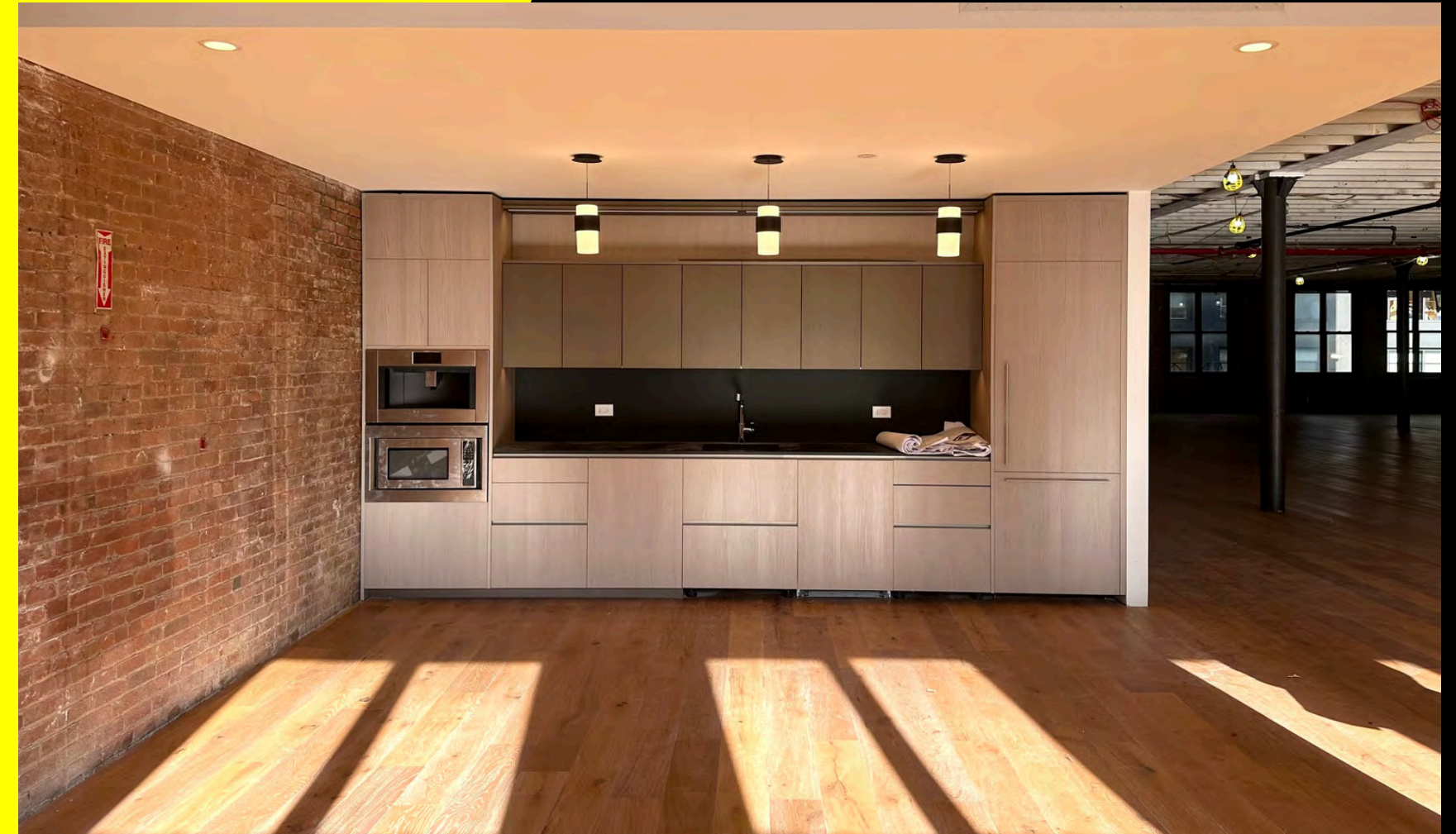
HIGHLIGHTS

- Full floor opportunity
- Newly renovated pre-built floor
- Brand new wet pantry with Miele appliances and Italian Polyform cabinetry
- 2 Brand new private restrooms
- Open area
- Reception and lounge areas



555 WEST 25TH STREET

Full 4th Floor



555 WEST 25TH STREET

Partial 3rd Floor

SIZE & ASKING RENT

Space A: 2,298 SF, \$12,400/month

Space C: 1,437 SF, \$6,000/month

Space D: 2,025 SF, \$8,000/month

Space E: 1,800 SF, \$6,750/month

Space B (Alternate): 3,700 SF, \$20,000/month

POSSESSION

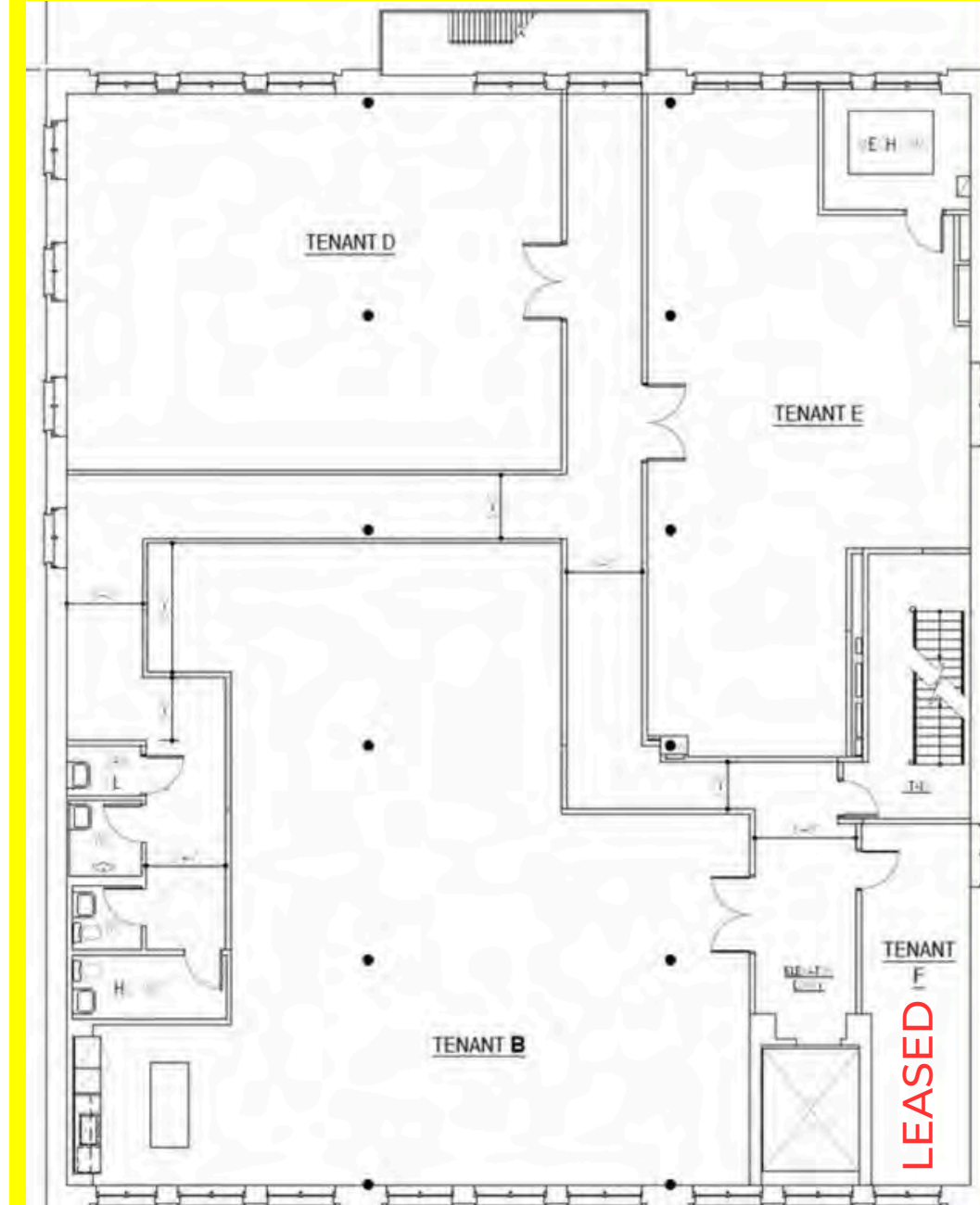
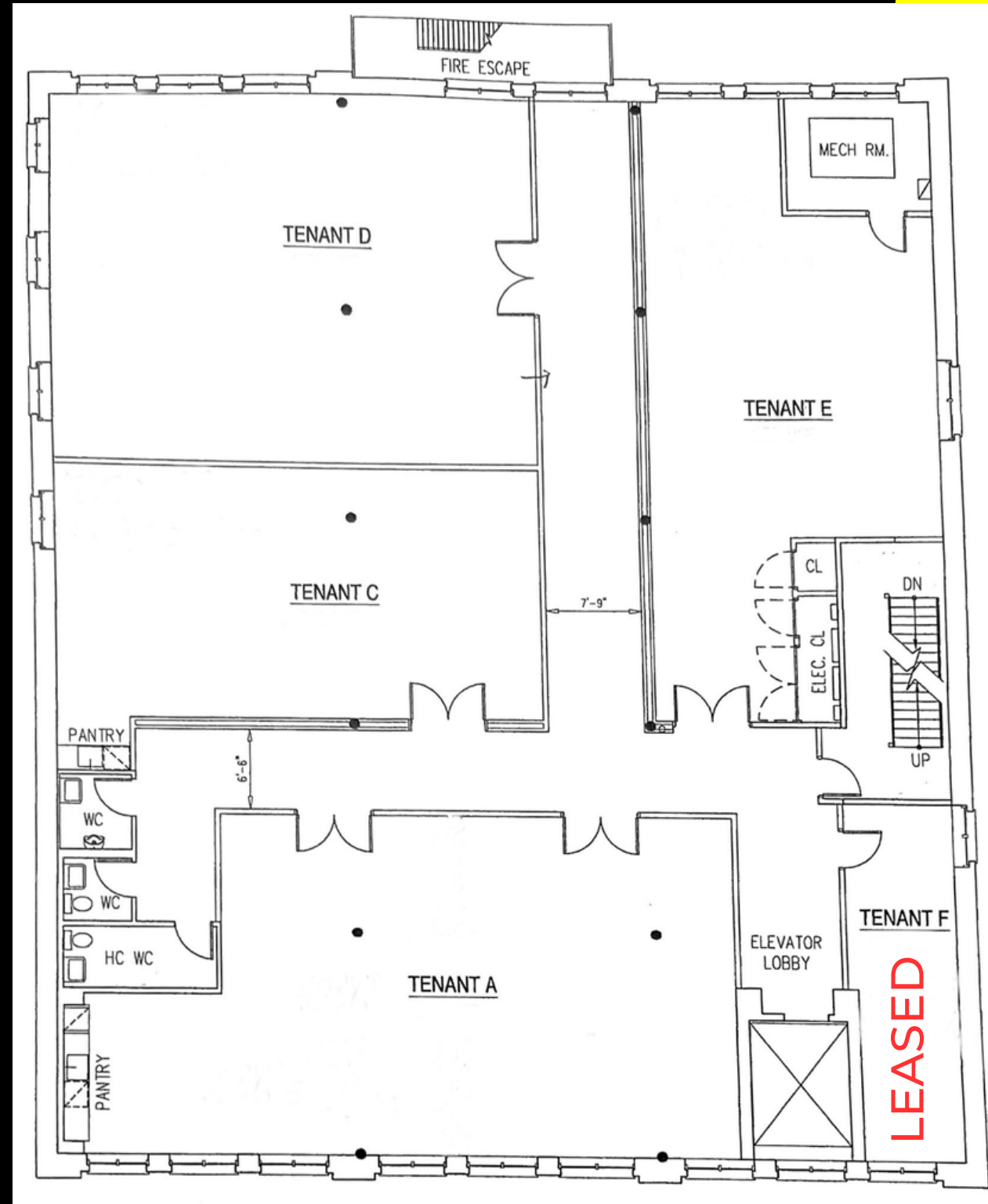
Immediate

TERM

Negotiable

HIGHLIGHTS

- Newly divided office spaces
- Can be delivered furnished
- Spaces A, C, D and E will have pantries
- Space C and D can be combined



Space B
(Alternate)



555 WEST 25TH STREET

Partial 2nd Floor

SIZE

4,700 RSF

POSSESSION

Immediate

ASKING RENT

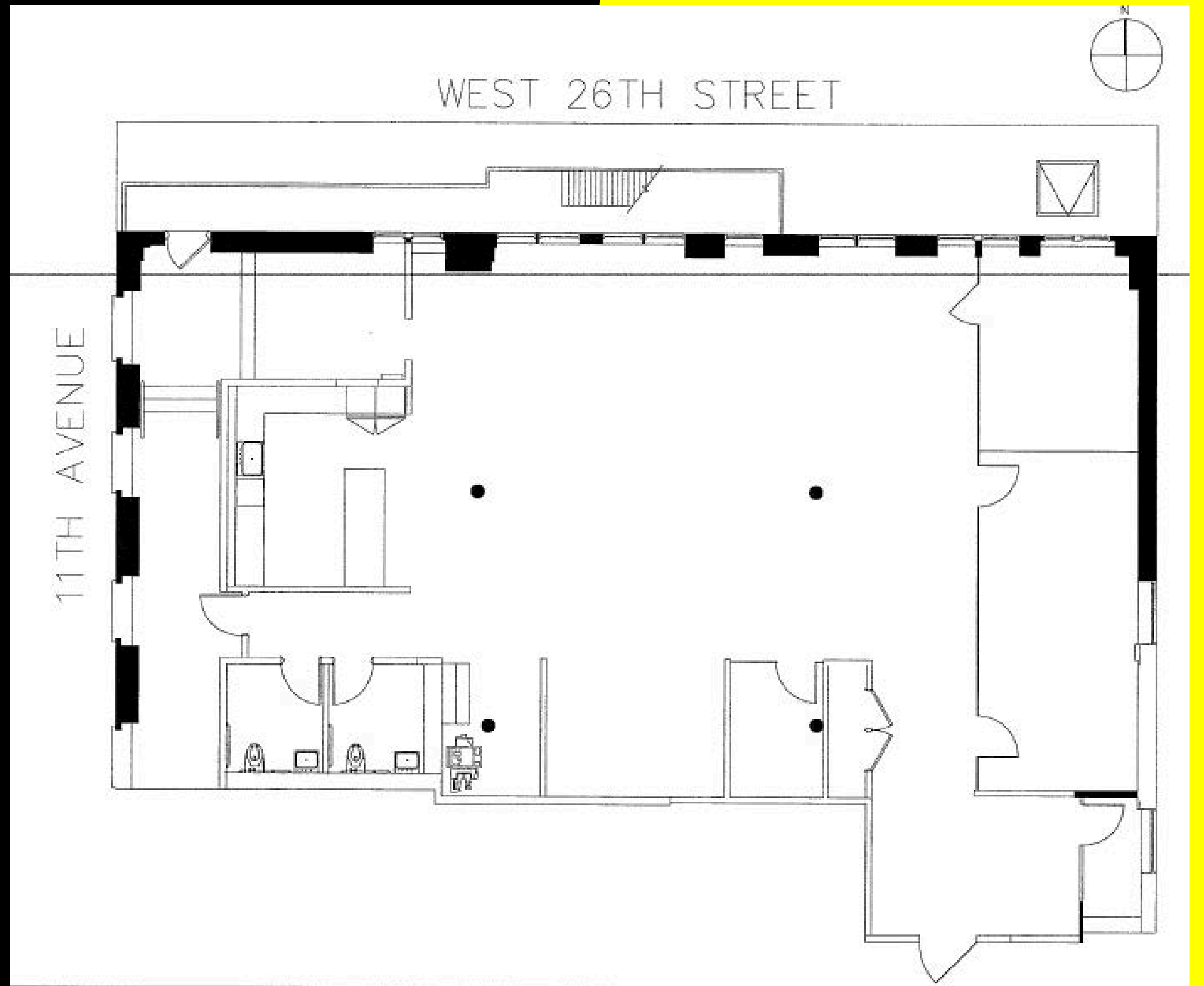
\$52 PSF

TERM

3-10 Years

HIGHLIGHTS

- Fully furnished
- High-end pantry
- Newly renovated
- High exposed ceilings





CONTACT

MICHAEL SEGERMAN

msegerman@currentadvisors.com

516.297.3337

ROY ABRAHAM

roy@currentadvisors.com

917.687.9070

CURRENT[®]
Real Estate Advisors