

336^W 23RD STREET

CHELSEA
BETWEEN 8TH AND 9TH AVENUE



336W23RDSTREET

SIZE

Ground Floor: 2,475 SF

Lower Level: 2,475 SF

Parlor: 1,400 SF

Patio: 700 SF

Total: 7,500 SF

SITE STATUS

Formerly Serge Normant

FRONTAGE

25' on 23rd Street

POSSESSION

Immediate

HIGHLIGHTS

- Fully built and operational hair salon
- Original parlor floor with chandeliers and fireplaces
- 9'-14' Ceiling heights
- Large rear outdoor patio
- Private commercial elevator
- Upgraded gas/water lines and electrical service
- ADA-accessible



336W23RDSTREET



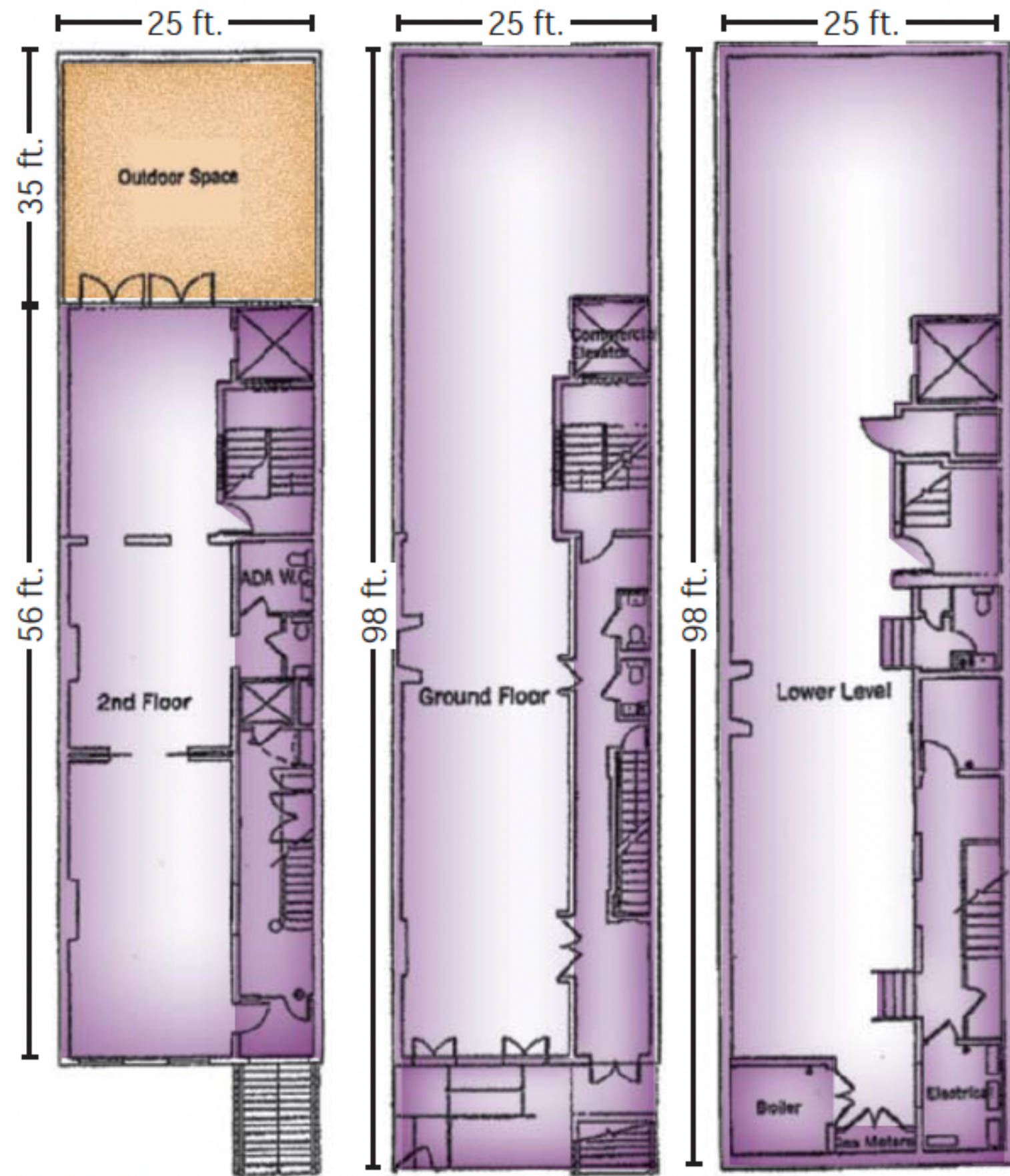
336 W 23RD STREET



Parlor - 1,400 sf
Outdoor - 700 sf

Ground
2,450 sf

Lower Level
2,450 sf



23rd Street

336W23RDSTREET

FLOOR PLAN





CONTACT

DEAN VALENTINO
dean.valentino@currentreadvisors.com
917.932.4376

MESHA VOSLEVITZ
mesha@currentreadvisors.com
646.543.8415

CURRENT[®]
Real Estate Advisors