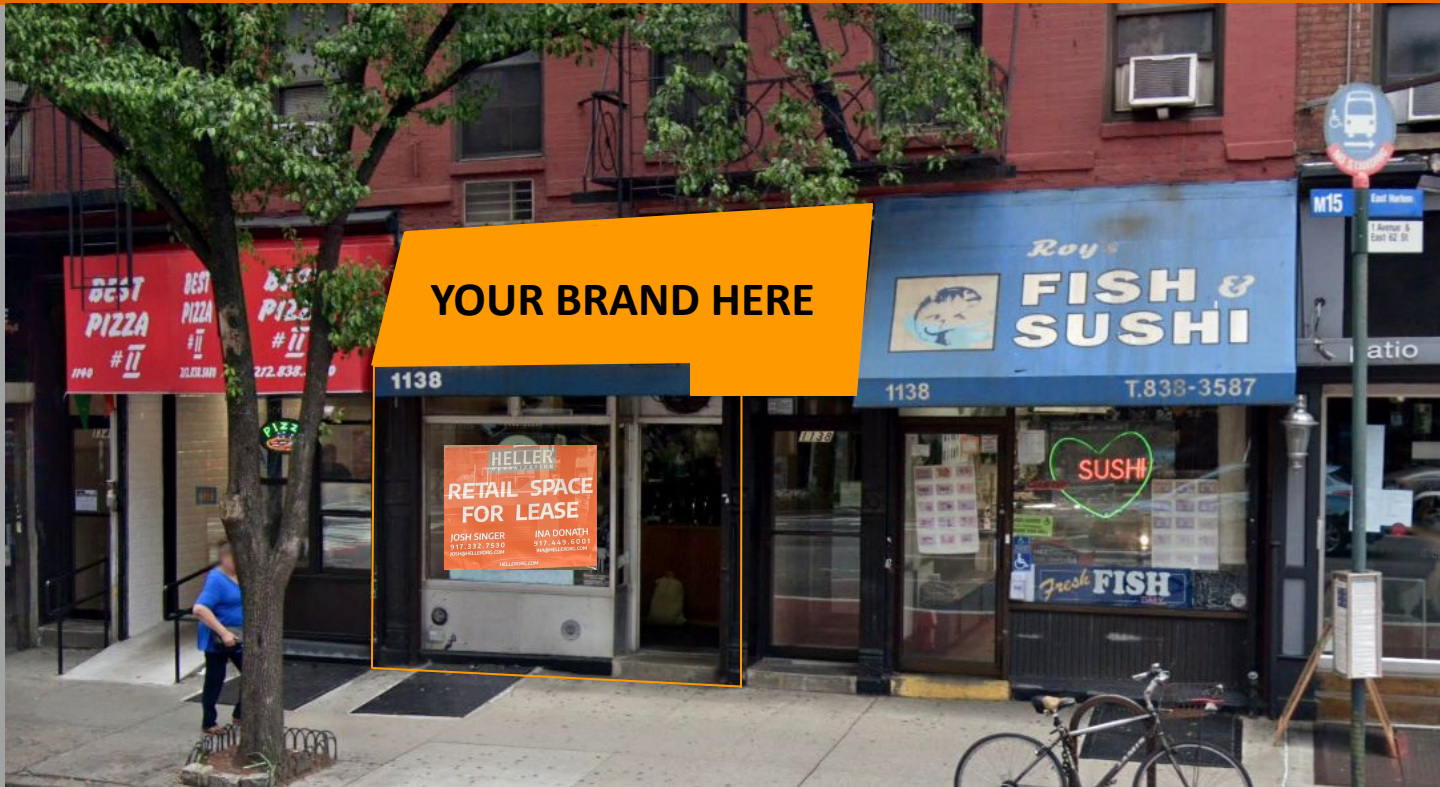


# 1138 1st Avenue

Between East 62nd & 63rd Streets  
New York, NY 10065

# HELLER ORGANIZATION



**SIZE:** Approx. 560 SF – Ground Floor

**POSSESSION:** Immediate

**RENT:** Upon Request

**TRANSPORTATION:** 4 5 6 N Q R W F

### COMMENTS:

- Landlord will arrange for some basement storage
- First time space is available in over 30 years
- Bathroom in place
- 10-year term
- All uses accepted

### NEIGHBORS:



**EXCLUSIVE AGENT**

**Ina Donath**  
ina@hellerorg.com

**917.449.6001**

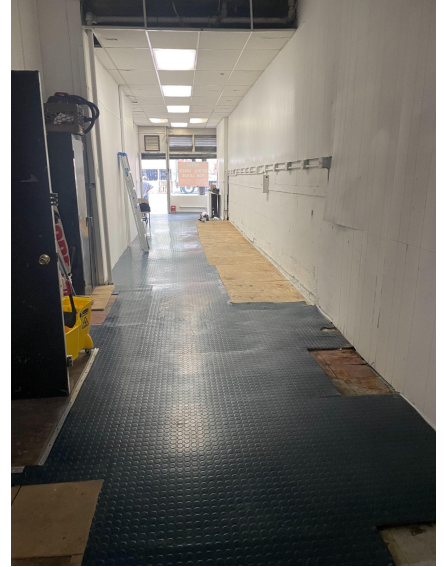
54 West 21<sup>st</sup> Street, 608 | New York, NY 10010 | O: 212.366.5034 | E: retail@hellerorg.com

All information is from sources deemed reliable. No representation is made and we do not guarantee the accuracy of any information provided. All information must be independently verified. The value of any real estate investment is dependant on a variety of factors and should be evaluated carefully by prospective purchasers and/or tenants.

# 1138 1st Avenue

Between East 62nd & 63rd Streets  
New York, NY 10065

**HELLER**  
ORGANIZATION



**EXCLUSIVE AGENT**

**Ina Donath**  
[ina@hellerorg.com](mailto:ina@hellerorg.com)

**917.449.6001**

54 West 21<sup>st</sup> Street, 608 | New York, NY 10010 | O: 212.366.5034 | E: [retail@hellerorg.com](mailto:retail@hellerorg.com)

All information is from sources deemed reliable. No representation is made and we do not guarantee the accuracy of any information provided. All information must be independently verified. The value of any real estate investment is dependant on a variety of factors and should be evaluated carefully by prospective purchasers and/or tenants.